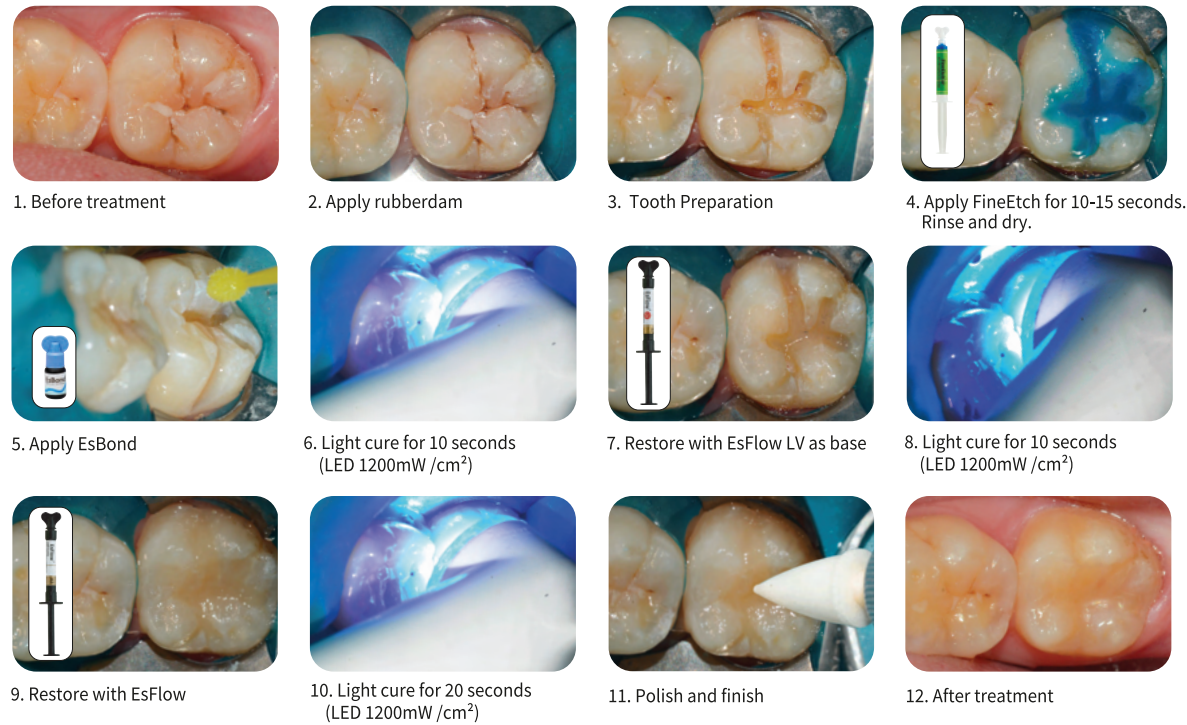
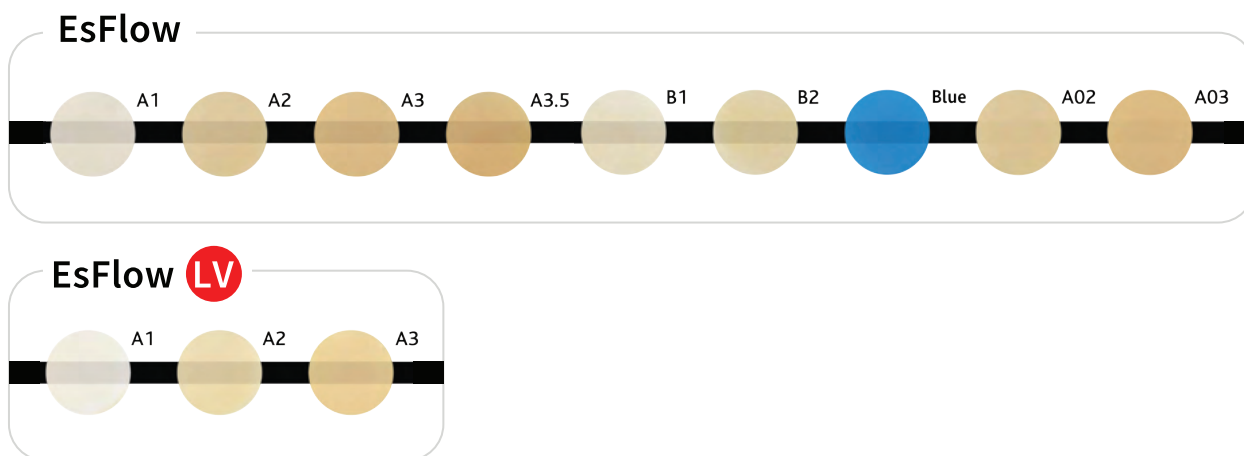


☒ Clinical Case



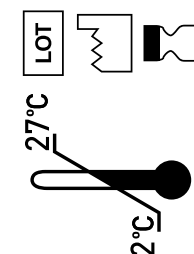
☒ Shade Guide



☒ Package

Available	Shade	Contents
EsFlow	A1, A2, A3, A3.5 B1, B2, A02, A03, Blue	2g x 2syringes
EsFlow LV	A1, A2, A3	2g x 2syringes
EsFlow Stand kit		2g x 10syringes, Clear stand

ESFLOW[®]
 Light Curing
 Flowable Composite Resin

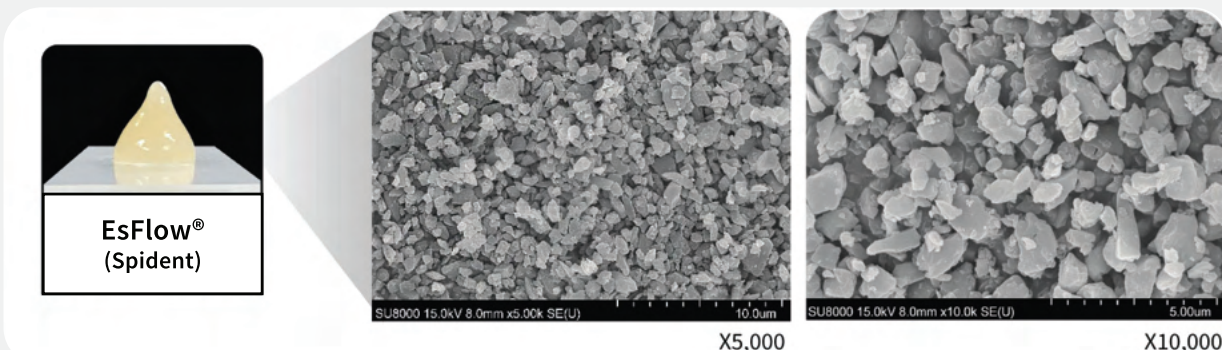
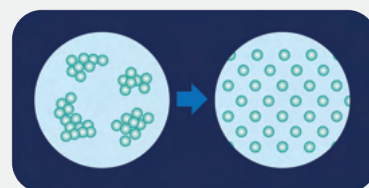


2g

SPIDENT
 SPIDENT CO., LTD.
 Made in Korea

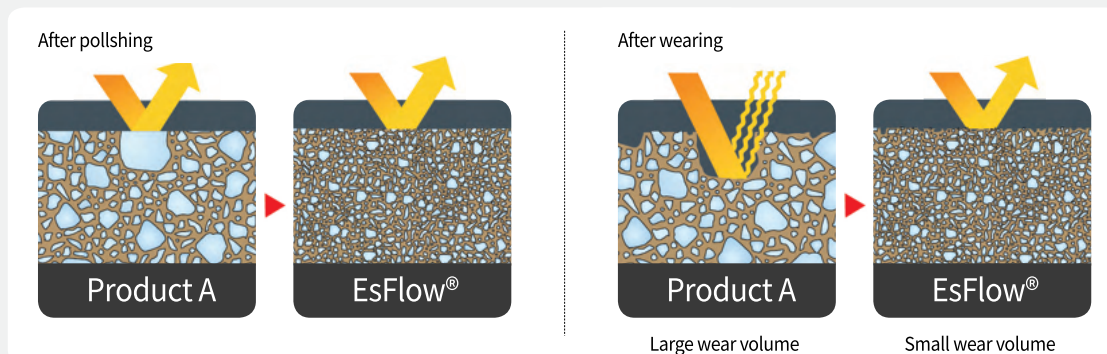
✓ Uniform filler dispersion

>> Through unique surface treatment, inorganic fillers have been dispersed uniformly with high density. Therefore EsFlow has great properties and high wear resistance.



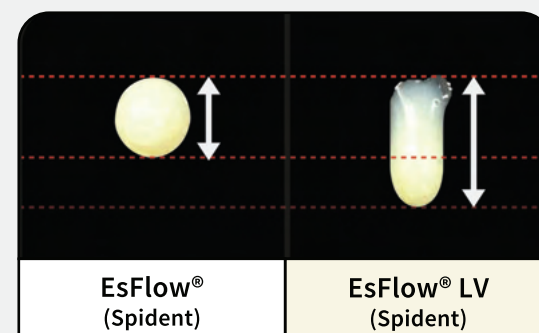
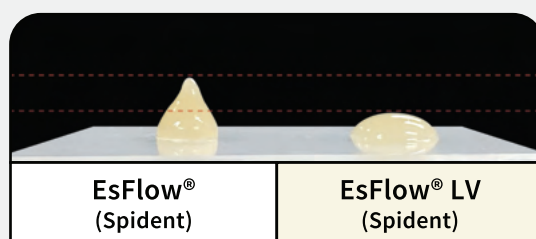
✓ Outstanding wear resistance

>> As nano fillers are evenly dispersed, it has small wear volume.



✓ EsFlow LV

>> EsFlow is provided in two viscosities. EsFlow has higher viscosity so it is easy to apply on Class I-V. EsFlow LV has lower viscosity and recommended to be used as baseliner.



*Source : Spident R&D center internal data.

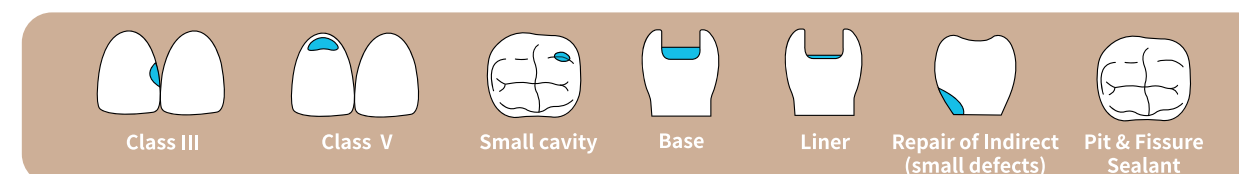
✓ Elephant Nose Tip

>> Elephant Nose Tip, maximized customers' convenience, is provided with EsFlow.



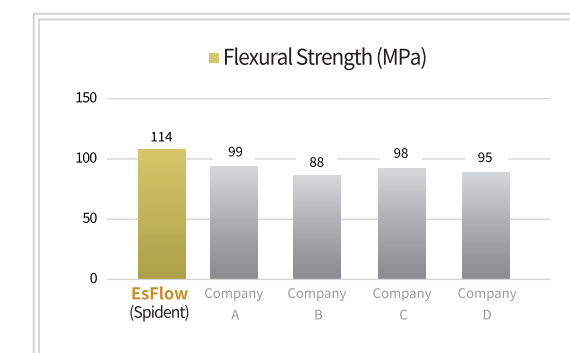
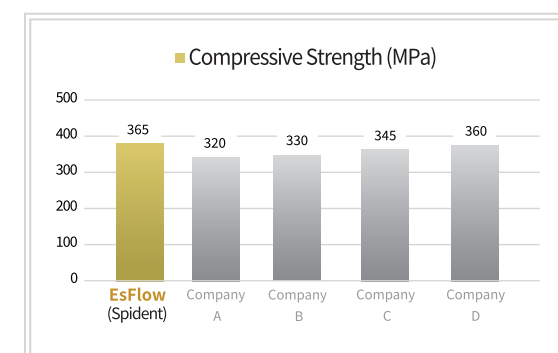
✓ Indication

>> EsFlow is a light cured flowable composite resin. It is versatile and can be applied to various cases as below.



✓ Excellent mechanical properties

>> EsFlow has high level of compressive strength and flexural strength compared to other flowable composites.



>> EsFlow uses multiple initiator system and has high degree of conversion. When cured, it makes radical reaction and shows very low polymerization shrinkage.

