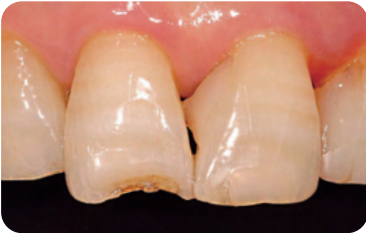
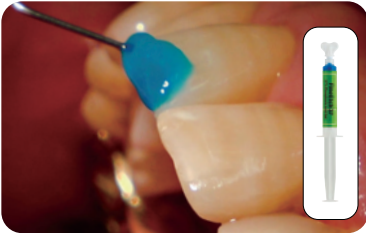


☒ Clinical Case



1. Before treatment



2. Apply FineEtch etchant for 10-15 seconds. Rinse and dry



3. Apply EsBond Adhesive and light cure for 10 seconds (LED 1200mW /cm²)



4. After filling with EsCom250 using stopstrip, contour and light cure for 20 seconds (LED 1200mW /cm²)

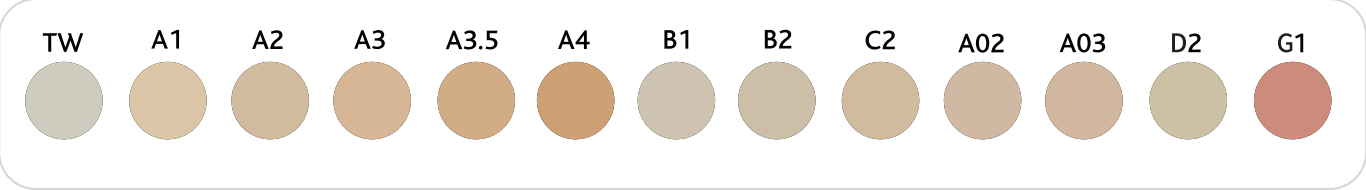


5. Polish and finish



6. After treatment

☒ Shade Guide



☒ Package

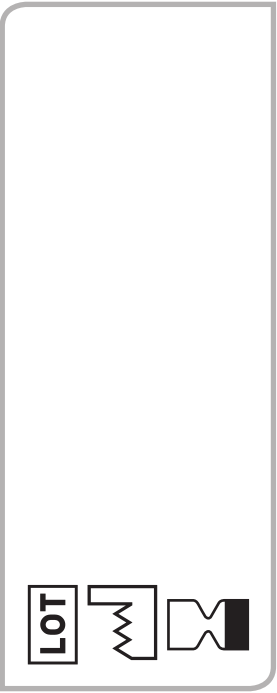
Available	Shade	Contents
EsCom250	TW, A1, A2, A3, A3.5, A4, B1, B2, C2, A02, A03, D2, G1	4g x 1 syringes
EsCom250 System Kit	A1, A2, A3, A3.5, B2	4g x 5 syringes, EsBond, FineEtch, accessories
EsCom250 Syringe Kit	A1, A2 x 2, A3 x 2, A3.5 B2, A03	4g x 8 syringes
EsCom250 Capsules	TW, A1, A2, A3, A3.5, A4, B1, B2, C2, A02, A03, D2, G1	0.25g x 20 capsules

A2

EsCom[®] 250

Light-Cured Restorative
Nano-Hybrid Composite Resin

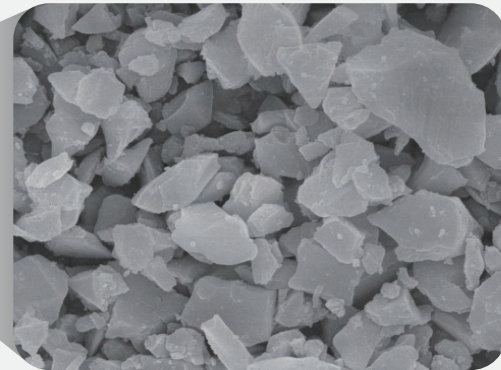
4g



LOT

✓ Nano-Hybrid Composite

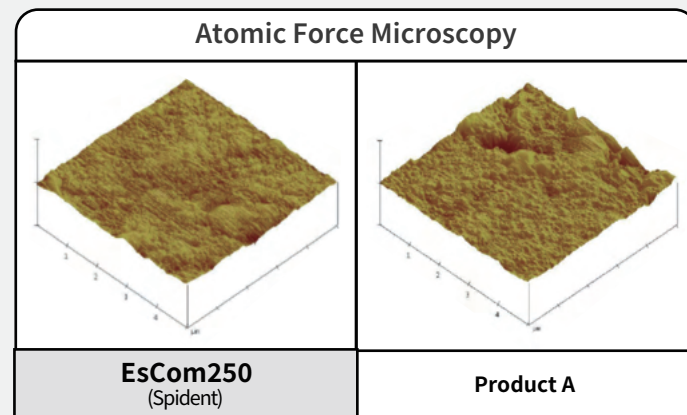
>> Nano-hybrid fillers make EsCom250 have great properties and more durable.



x10,000

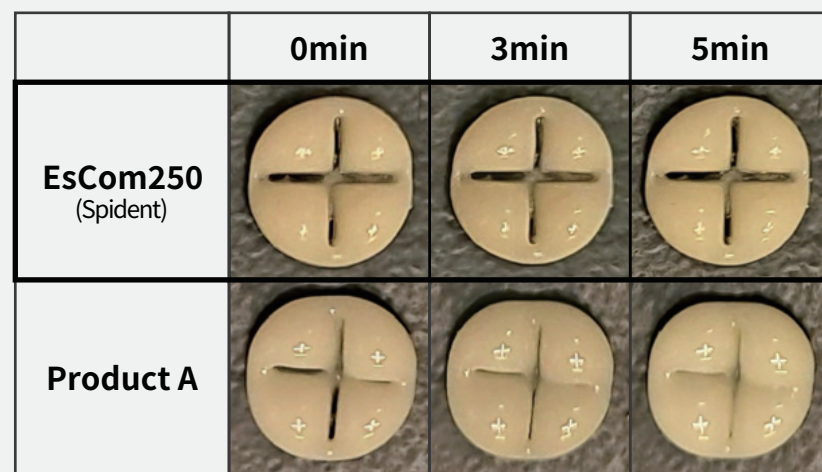
✓ Outstanding Wear Resistance

>> As nano fillers are dispersed uniformly, it has very low surface roughness, which does not interrupt with the opposite tooth. Additionally, with smaller particles, it has exceptional wear resistance.



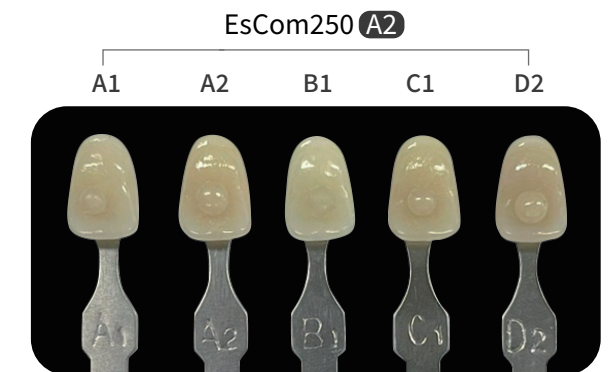
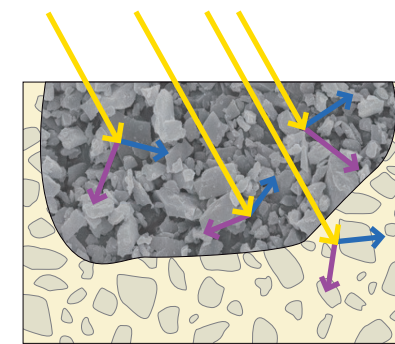
* Source Korea Polymer Testing & Research Institute.

✓ Shape Retention



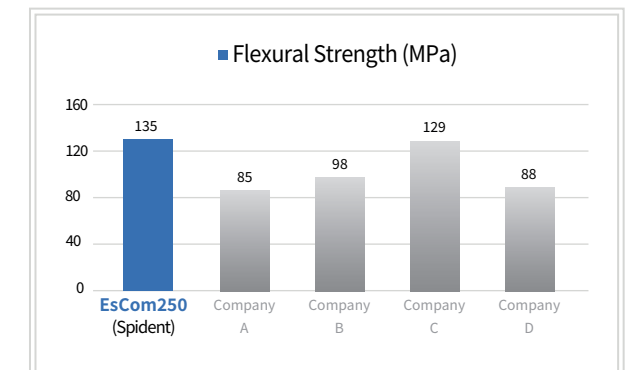
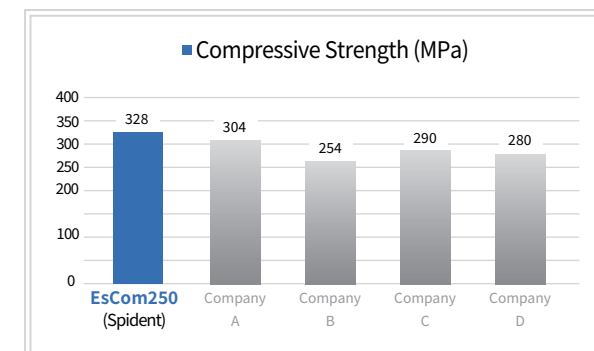
✓ Superior Shade Matching

>> One shade can invisibly blend with several tooth shades and shows superior shade match.

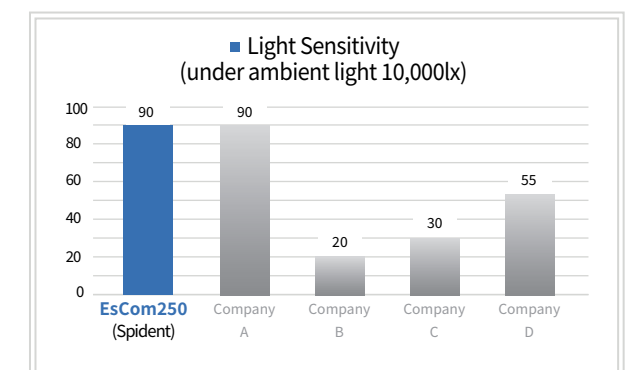
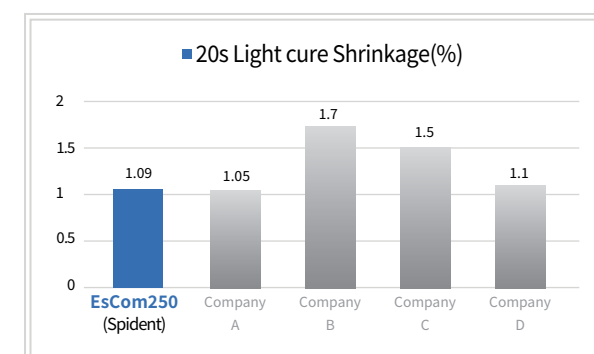


✓ Excellent Mechanical Properties

>> EsCom250 has exceptional compressive strength and flexural strength and guarantees durable restorations.



>> EsCom250 has very low polymerization shrinkage and has no worries of marginal leakage and secondary carries. It also minimized light sensitivity and gives you more time to contour.

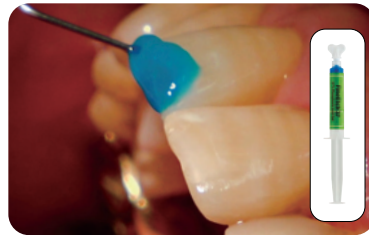


*Source : Spident R&D center internal data.

✓ Clinical Case



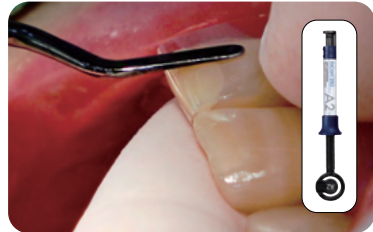
1. Before treatment



2. Apply FineEtch etchant for 10-15 seconds.
Rinse and dry



3. Apply EsBond Adhesive and light cure for 10 seconds (LED 1200mW/cm²)



4. After filling with EsCom250 using stopstrip, contour and light cure for 20 seconds (LED 1200mW/cm²)

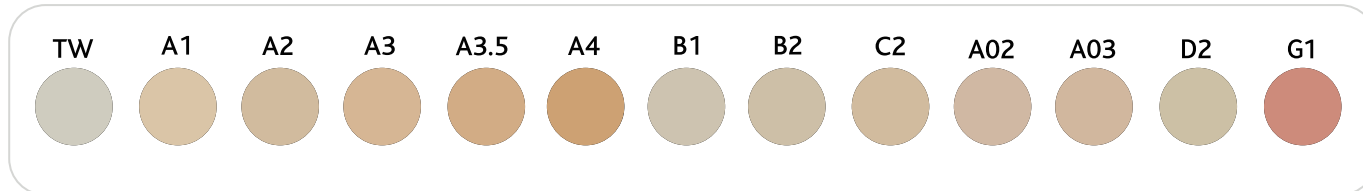


5. Polish and finish



6. After treatment

✓ Shade Guide



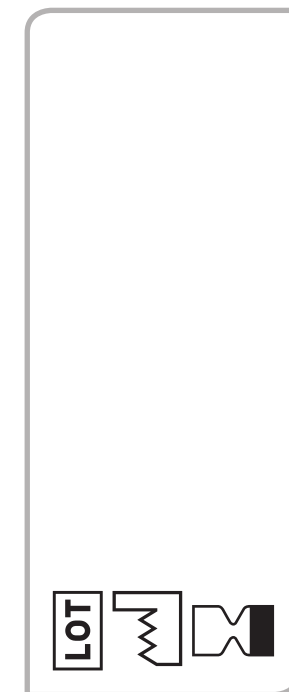
✓ Package

Available	Shade	Contents
EsCom250	TW, A1, A2, A3, A3.5, A4, B1, B2, C2, A02, A03, D2, G1	4g x 1 syringes
EsCom250 System Kit	A1, A2, A3, A3.5, B2	4g x 5 syringes, EsBond, FineEtch, accessories
EsCom250 Syringe Kit	A1, A2 x 2, A3 x 2, A3.5 B2, A03	4g x 8 syringes
EsCom250 Capsules	TW, A1, A2, A3, A3.5, A4, B1, B2, C2, A02, A03, D2, G1	0.25g x 20 capsules

EsCom[®] 250

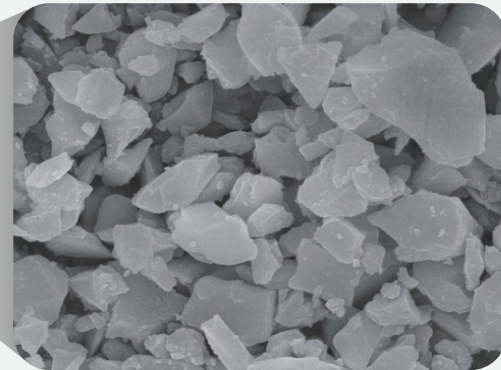
Light-Cured Restorative Nano-Hybrid Composite Resin

4g



✓ Nano-Hybrid Composite

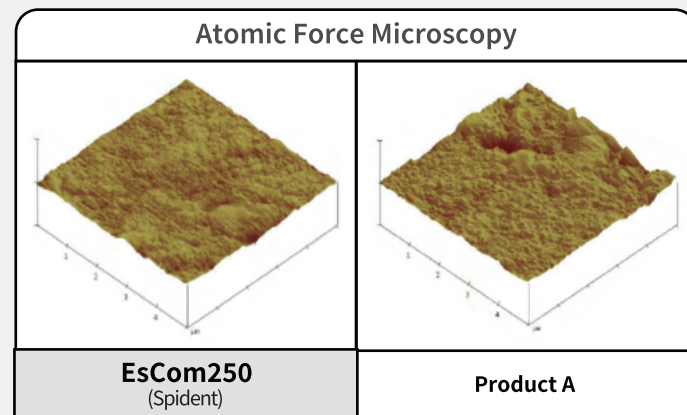
>> Nano-hybrid fillers make EsCom250 have great properties and more durable.



x10,000

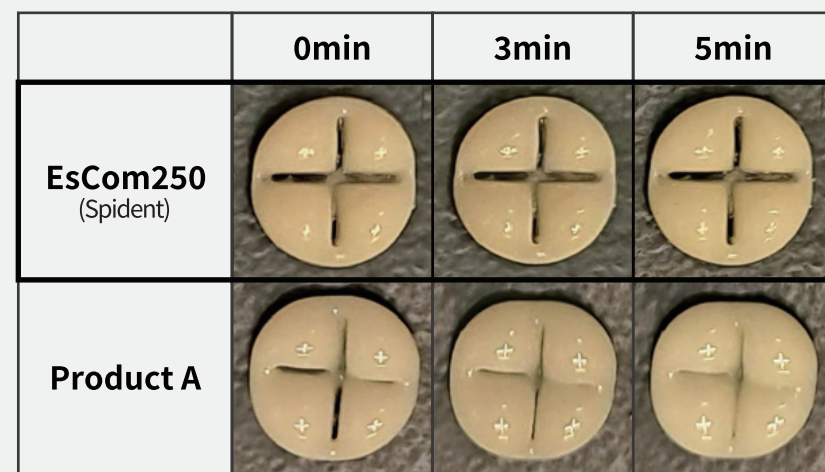
✓ Outstanding Wear Resistance

>> As nano fillers are dispersed uniformly, it has very low surface roughness, which does not interrupt with the opposite tooth. Additionally, with smaller particles, it has exceptional wear resistance.



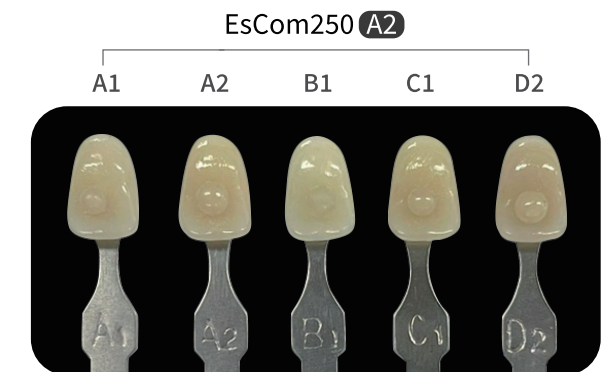
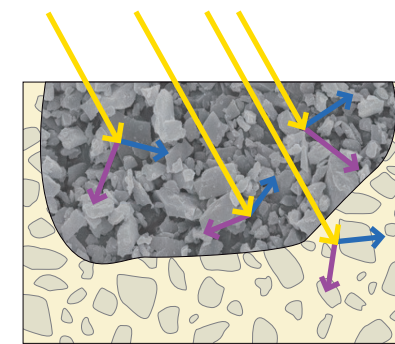
* Source Korea Polymer Testing & Research Institute.

✓ Shape Retention



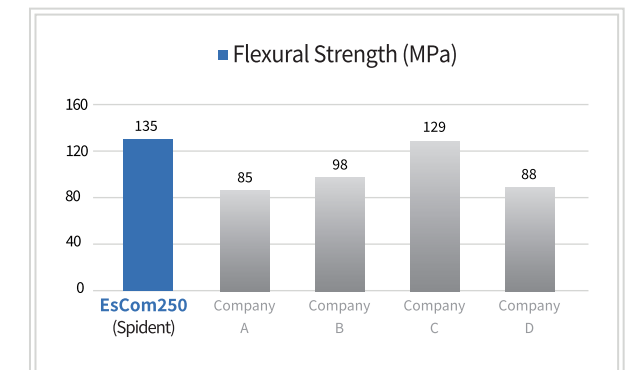
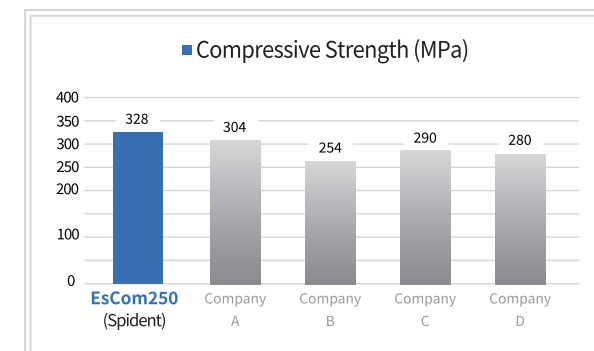
✓ Superior Shade Matching

>> One shade can invisibly blend with several tooth shades and shows superior shade match.

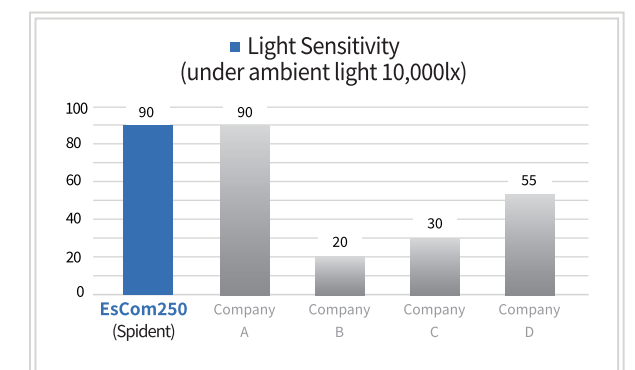
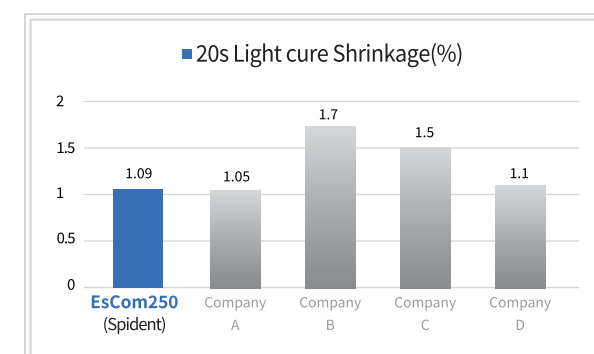


✓ Excellent Mechanical Properties

>> EsCom250 has exceptional compressive strength and flexural strength and guarantees durable restorations.



>> EsCom250 has very low polymerization shrinkage and has no worries of marginal leakage and secondary carries. It also minimized light sensitivity and gives you more time to contour.



*Source : Spident R&D center internal data.